

Brannslukking i Protetikk

Asbjørn Jokstad
Institutt for Klinisk Odontologi
Universitetet i Oslo

Internett:

[http://www.odont.uio.no/protetikk/
reparasjoner.pdf](http://www.odont.uio.no/protetikk/reparasjoner.pdf)



Tannstøttet



Fast Slimhinnestøttet

Avtagbart

Implantatstøttet



Hyppige teknisk-mekaniske feil og skader og ulike implantatsystem

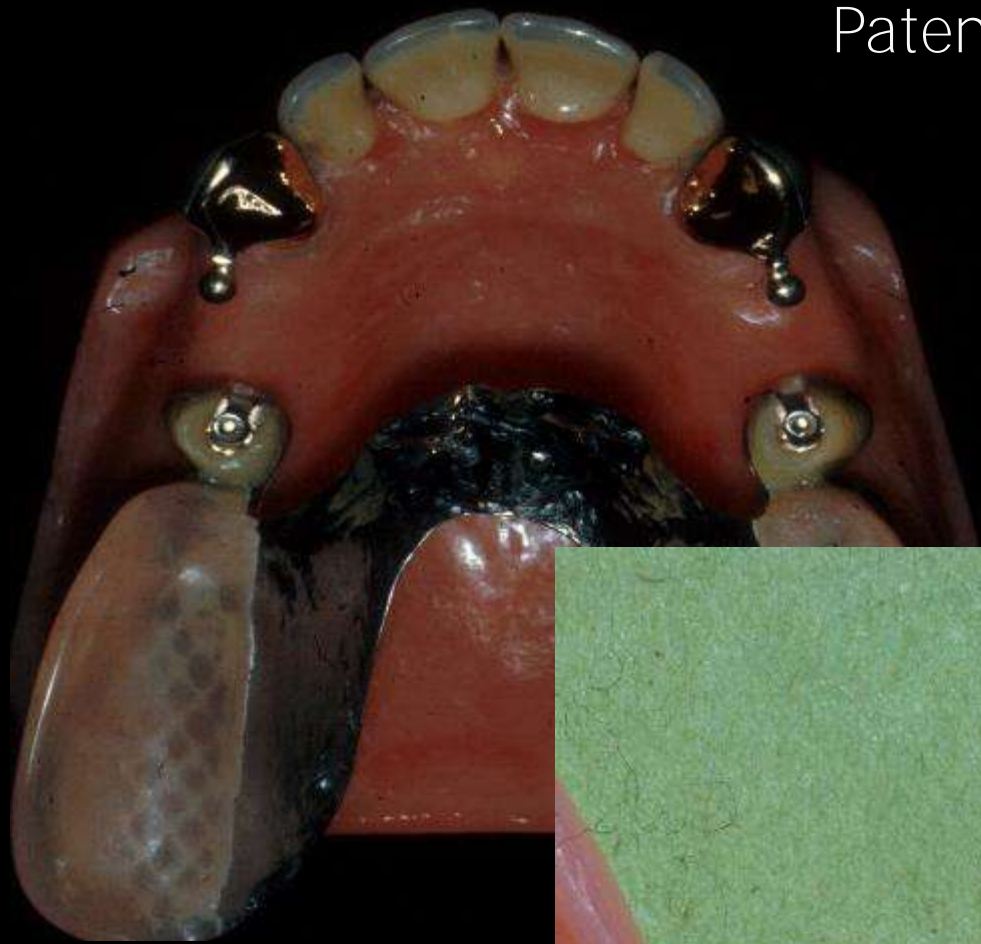
Implantatstøttet HENVIS



Titrimplanter



Patentfester syn. attachment



Relativt hyppige teknisk-mekaniske reparasjoner. Mange ulike attachments



PARTIELL/HELFRAKTUR

klammer/opplegg

matrise/patrise

protesebasis

Stomatitt /Candida

...overgang partiell til helprotese



Avtagbart





Tannstøttet



Patologiske tilstander

1. SEKUNDÆRKARIES
2. ROTBEHANDLING AV ANKERTANN
3. EKSTRAKSJON AV ANKERTANN

Teknisk-mekaniske feil og skader

4. FASADEMATERIALE BORTE
5. " BROFESTE
6. " **BRO**
7. FRAKTUR



Hvor ofte er det problemer med fast protetik?

- Helkeramkroner (8%) (**OBS! Kort observasjonstid**)
- Stiftkonus (10%)
- Konvensjonelle singlekroner (11%)
- Etsbroer (26%)
- Konvensjonelle broer (27%)

Vanligste problem med etsebroer

	Number of prostheses studied/affected	Mean incidence
Debonding	7029/1481	21%
Tooth discoloration	343/62	18%
Caries	3426/242	7%
Porcelain fracture	1126/38	3%
Periodontal disease	748/0	0.0% (no significant changes)

Goodacre et al. 2003

Vanligste problem med bro-proteser

Need for endodontic treatment	Number of prostheses or abutments studied/affected	Mean incidence
Caries	3360/602 abutments 1354/113 prostheses	18% of abutments 8% of prostheses
Need for endodontic treatment	2514/276 abutments 1357/88 prostheses	11% of abutments 7% of prostheses
Loss of retention	1906/137 prostheses	7%
Esthetics	1024/58 prostheses	6%
Periodontal disease	1440/62 prostheses	4%
Tooth fracture	1602/44 prostheses	3%
Prosthesis fracture	1192/24 prostheses	2%
Porcelain veneer fracture	768/17 prostheses	2%

Goodacre et al. 2003

Patologiske tilstander i tenner og støttevev

1. SEKUNDÆRKARIES
2. ROTBEHANDLING AV PILAR
3. EKSTRAKSJON AV BROPILAR

Teknisk-mekaniske feil og skader

4. FASADEMATERIALE BORTE
5. " BROFESTE
6. " BRO
7. BROFRAKTUR

Konserverende
behandling



Patologiske tilstander i tenner og støttevev

1. SEKUNDÆRKARIES
2. ROTBEHANDLING AV PILAR
3. EKSTRAKSJON AV BROPILAR

Teknisk-mekaniske feil og skader

4. FASADEMATERIALE BORTE
5. " BROFESTE
6. " BRO
7. BROFRAKTUR



Krone av, inspeksjon,
resementering

Patologiske tilstander i tenner og støttevev

1. SEKUNDÆRKARIES
2. ROTBEHANDLING AV PILAR
3. EKSTRAKSJON AV BROPILAR

Teknisk-mekaniske feil og skader

4. FASADEMATERIALE BORTE
5. " BROFESTE
6. " BRO
7. BROFRAKTUR



Vanligste problem med enkel-kroner

	Number studied/affected	crowns	Mean incidence
Need for endodontic treatment	823/27		3%
Porcelain fracture	199/6		3%
Loss of retention	1,061/19		2%
Periodontal disease	986/6		0.6%
Caries	1,105/4		0.4%

MK-kroner

	Number of crowns studied/affected	Mean incidence
Fracture	4277/318	7%
Loss of retention	545/11	2%
Pulpal health	1088/15	1%
Caries	1650/13	0.8%
Periodontal disease	942/0	0.0% (no significant changes)

Helkeram-kroner

Goodacre et al. 2003



Singel krone:

- Keram:
 - Fraktur
 - Puss & poler
- Fjerne:
 - Krone
 - Tentativt reversibelt
 - Irreversibelt
 - Stift
- Resementering
- Tilpasse ny krone til eksisterende partiell protese-klammer

Porselensreparasjon



Porselensreparasjon – Konsept 1/3

**Flusssyre +
Silanisering**

**Eksempel:
Porcelain Repair Kit.
Porcelain Prep Kit**

**Ultradent
PulpDent**



Porselensreparasjon – Konsept 2/3

Flusssyre +silan	“Porcelain Prep Kit” PulpDent (9,6% HF->Dry-Rite->Silane Bond->...)
Fosforsyre + silan	“Ceramic Repair Set” Vivadent (37% PA->Monobond-S-> Heliobond->Monopaque-> Heliobond->Microhybrid)

Porselensreparasjon – Konsept 3/3

Konsept 1: Flusssyre +silan	“Porcelain Prep Kit” PulpDent (9,6% HF->Dry-Rite-> Silane Bond->...)
Konsept 2: Fosforsyre +silan	“Ceramic Repair Set” Vivadent (37% PA-> Monobond-S-> Heliobond-> Monopaque->Heliobond->Microhybrid)
Porcelain Liner M, Super-Bond C&B	Sun Medical Kuraray/J. Morita

Porcelain Repair Kits

1. **Clearfil Repair**
Kuraray
2. **Porcelain Repair Kit**
Ultradent
3. **Ceramic Repair**
Ivoclar Vivadent
4. **Porcelain Prep Kit**
Pulpdent
5. **Porcelain Bonding Kit**
Sultan Chemists

Porselensreparasjon – Konsept 3/3

Flusssyre +silan	“Porcelain Prep Kit” PulpDent (9,6% HF->Dry-Rite-> Silane Bond->...)
Fosforsyre +silan	“Ceramic Repair Set” Vivadent (37% PA-> Monobond-S-> Heliobond-> Monopaque->Heliobond->Microhybrid)
Porcelain Liner M, Super-Bond C&B	Sun Medical, Kuraray/J. Morita
Silane ((Ceramic) Primer)	e.g. Bisco, Kerr, Ultradent, 3M-ESPE

Silane Coupling Agents



- 1a. **Clearfil Porcelain Bond Activator**
Kuraray
- 1b. **RelyX Ceramic Primer**
3M ESPE
2. **Monobond-S**
Ivoclar Vivadent
- 3a. **Silane**
Ultradent
- 3b. **Silane Bond Enhancer**
Pulpdent
- 3c. **Silane Primer**
sds/Kerr
4. **Silanator**
Cosmedent

Rubber Polishing Instruments

Composite

- 1a. **Astropol**
Ivoclar Vivadent
- 1b. **D♦Fine Diamond Polishers for Hybrid Composites**
Clinician's Choice
- 1c. **Hawe HiLuster**
sds/Kerr
- 1d. **Jiffy HiShine**
Ultradent
- 2a. **Diacomp**
Brasseler
- 2b. **PoGo**
Dentsply/Caulk
- 3a. **Hawe Occlubrush**
sds/Kerr
- 3b. **Jiffy Brushes**
Ultradent
4. **Jiffy Polishing Cups, Points, Disks**
Ultradent

Porcelain

1. **Dialite**
Brasseler
- 2a. **CeraGlaze Ultimate**
Axis
- 2b. **CeraMaster**
Shofu
3. **D♦Fine Diamond Polishers for Porcelain**
Clinician's Choice
- 4a. **Ceramisté**
Shofu
- 4b. **Ceramisté Soft**
Shofu



Polishing Pastes

Composite

1. **Prisma-Gloss/**
Prisma-Gloss Extra Fine
Dentsply/Caulk
2. **Insta-Glaze HYB**
George Taub
- 3a. **CompoSite**
Shofu
- 3b. **Enamelize**
Cosmedent

Porcelain

1. **Diamond Polish**
Ultradent
- 2a. **Diamond Polishing Paste**
Ivoclar Vivadent
- 2b. **Diamond Restoration Polish**
Vident
- 2c. **Diashine**
VH Technologies
- 2d. **Porcelize**
Cosmedent
- 2e. **Truluster**
Brasseler

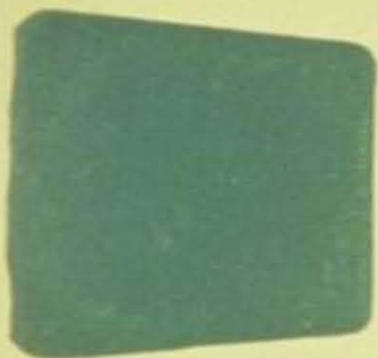
Tentativt reversibel kronedefjerning

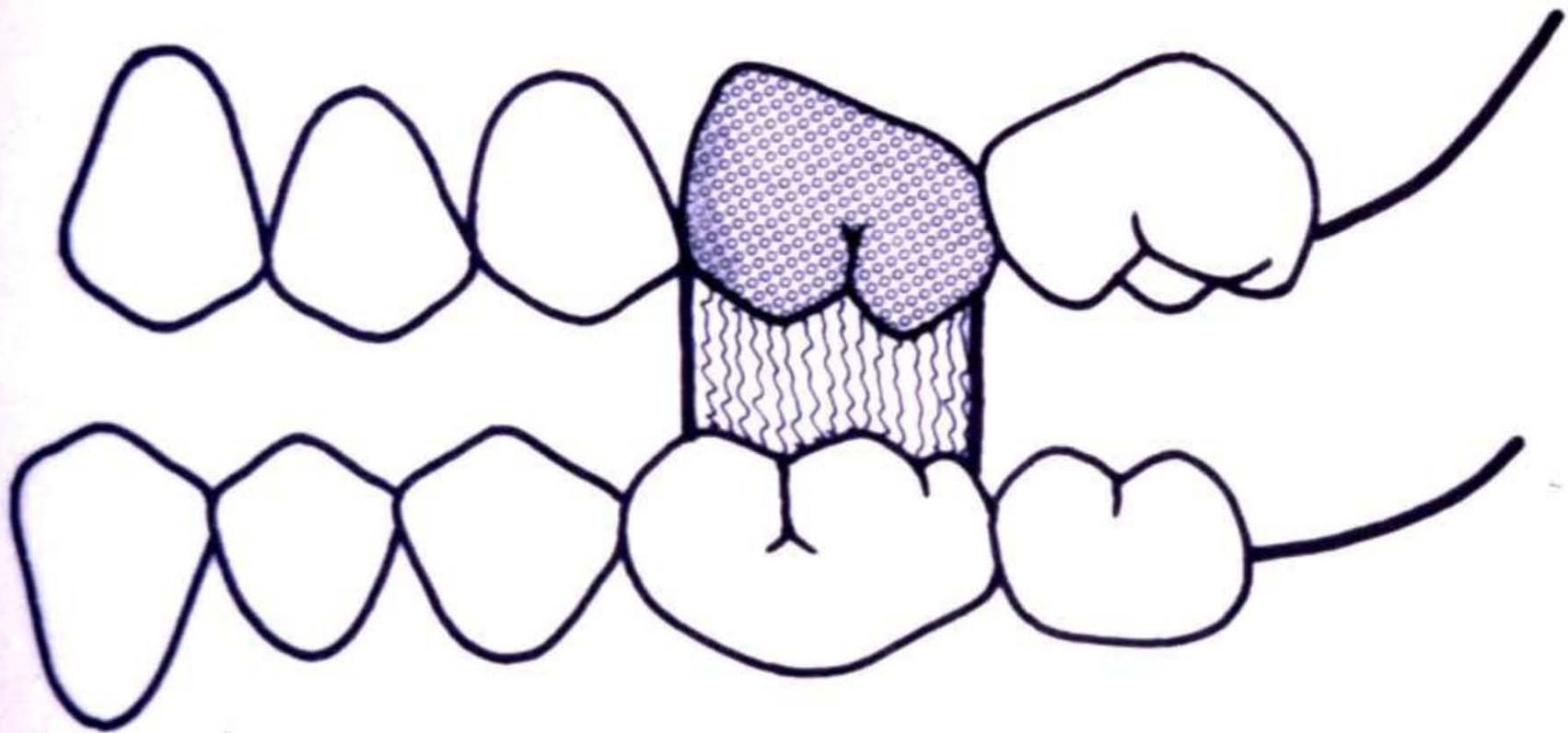
Crown and Bridge Removers

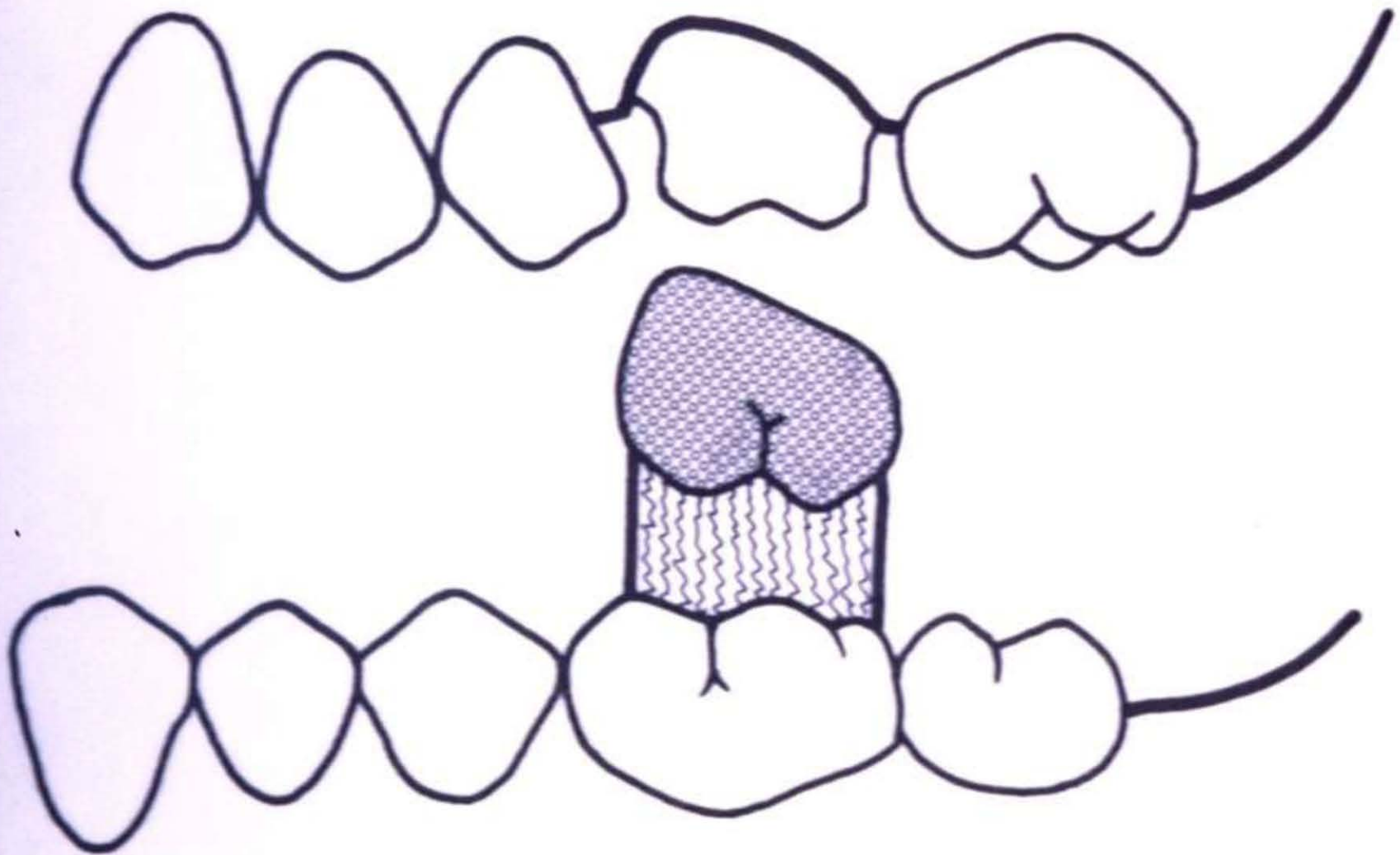
1. **CORONAflex 2005**
KaVo
- 2a. **ATD Automatic Crown and Bridge Remover**
J. Morita USA
- 2b. **Hawn Universal**
NAE-Tech
3. **Crown Spreader**
Brasseler
4. **Easy Pneumatic Crown and Bridge Remover**
Dent Corp
5. **Richwil**
Almore

Richwill Teknikk

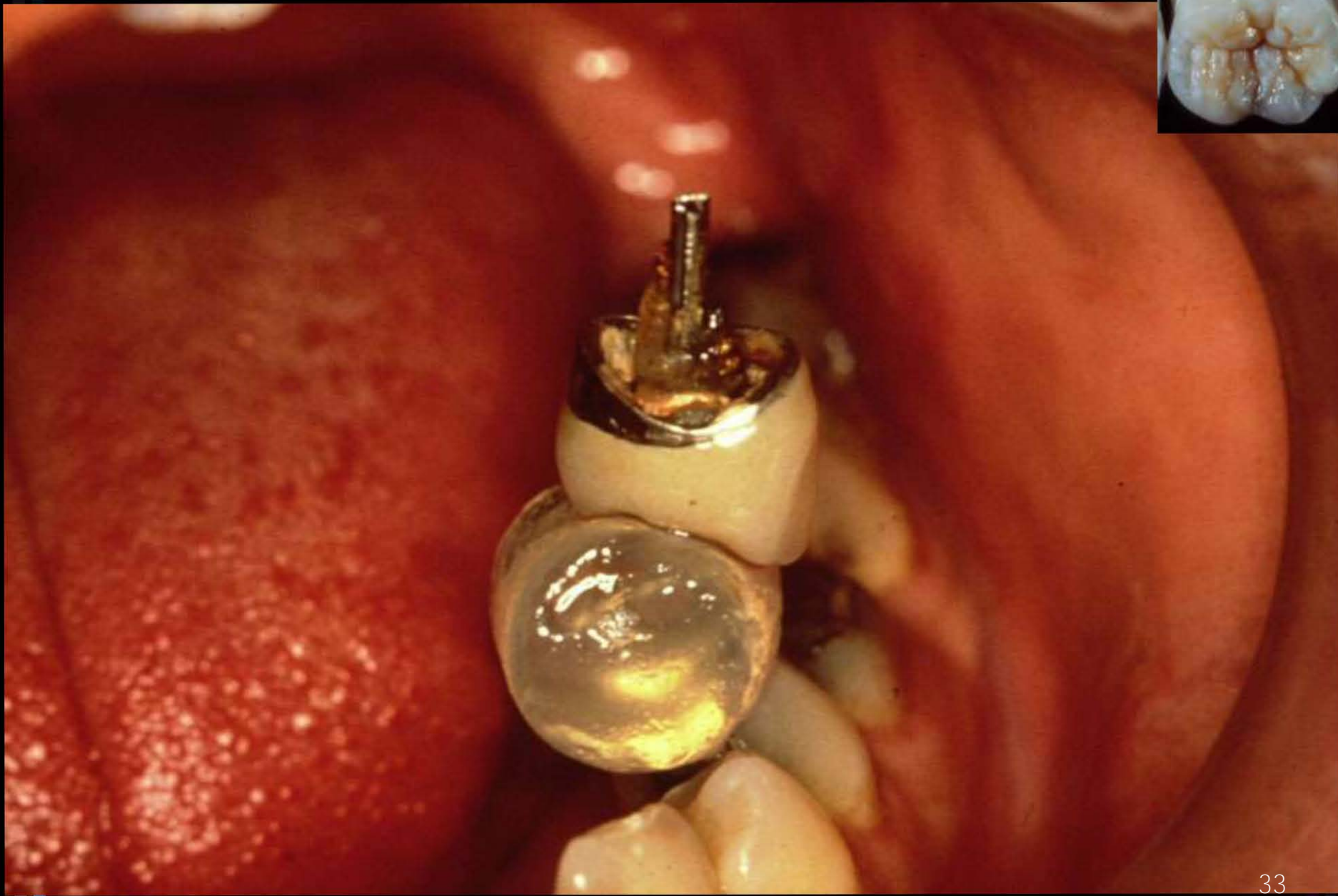
- Evaluer antagonist
- Varm pastillen i pakken
- Instruer pasient
- Tørrlegg krone og antagonist
- Tilpass pastille til kronen – gjerne tang
- Pasient lukker og holder lukket i 10 sek.
- Pasient gaper raskt opp
- Gjenta dersom behov











Irreversibel kronedefjerning

Kronefjerning

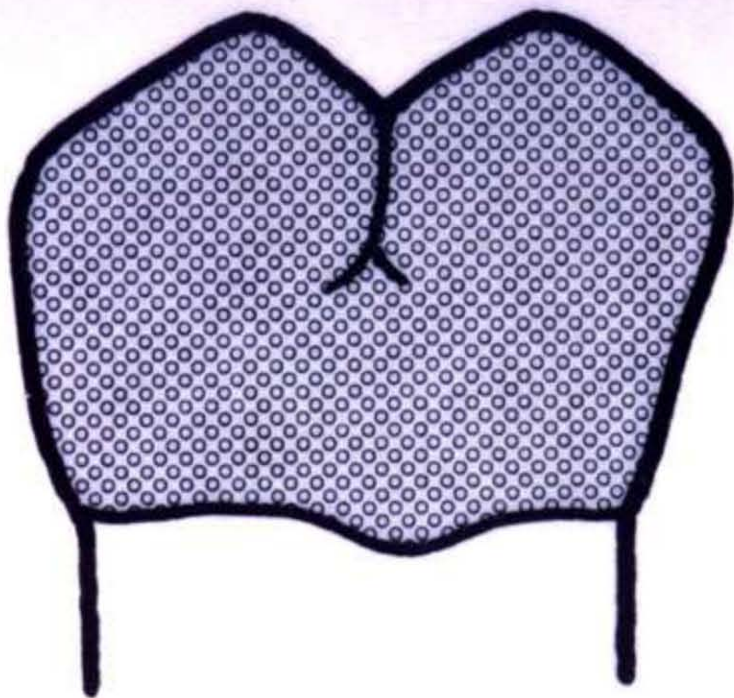
- Gasbind bakerst i svelg
- 330 Karbid eller H34-010
- Start hvor det er best tilgjengelig
- Lag en fure til sementlinjen for å ikke skade tann
- Fortsett fure inntil 1-2 mm krone står igjen lingualt
- Separer segmentene med et instrument
- Fjern kronen

A close-up photograph of a dental bur, a small metal tool used for grinding and shaping teeth. The bur is shown in profile, with its sharp, tapered tip pointing upwards. The tool is set against a background of blue, textured paper. A white rectangular box with a blue border is positioned to the right of the bur's tip, containing the text 'H34-010'.

H34-010

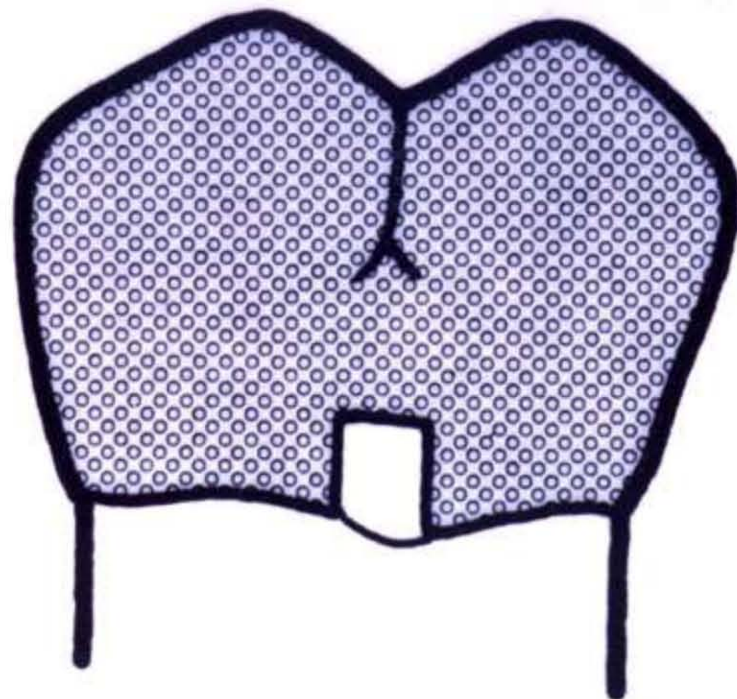
A close-up photograph of a dental carbide bur. The bur is a long, thin, tapered metal tool with a sharp, rounded tip. It is mounted on a larger, wider metal base. The background is a textured, blue surface. A blue rectangular box with a white border is overlaid on the right side of the image, containing the text "330 Karbid".

330 Karbid



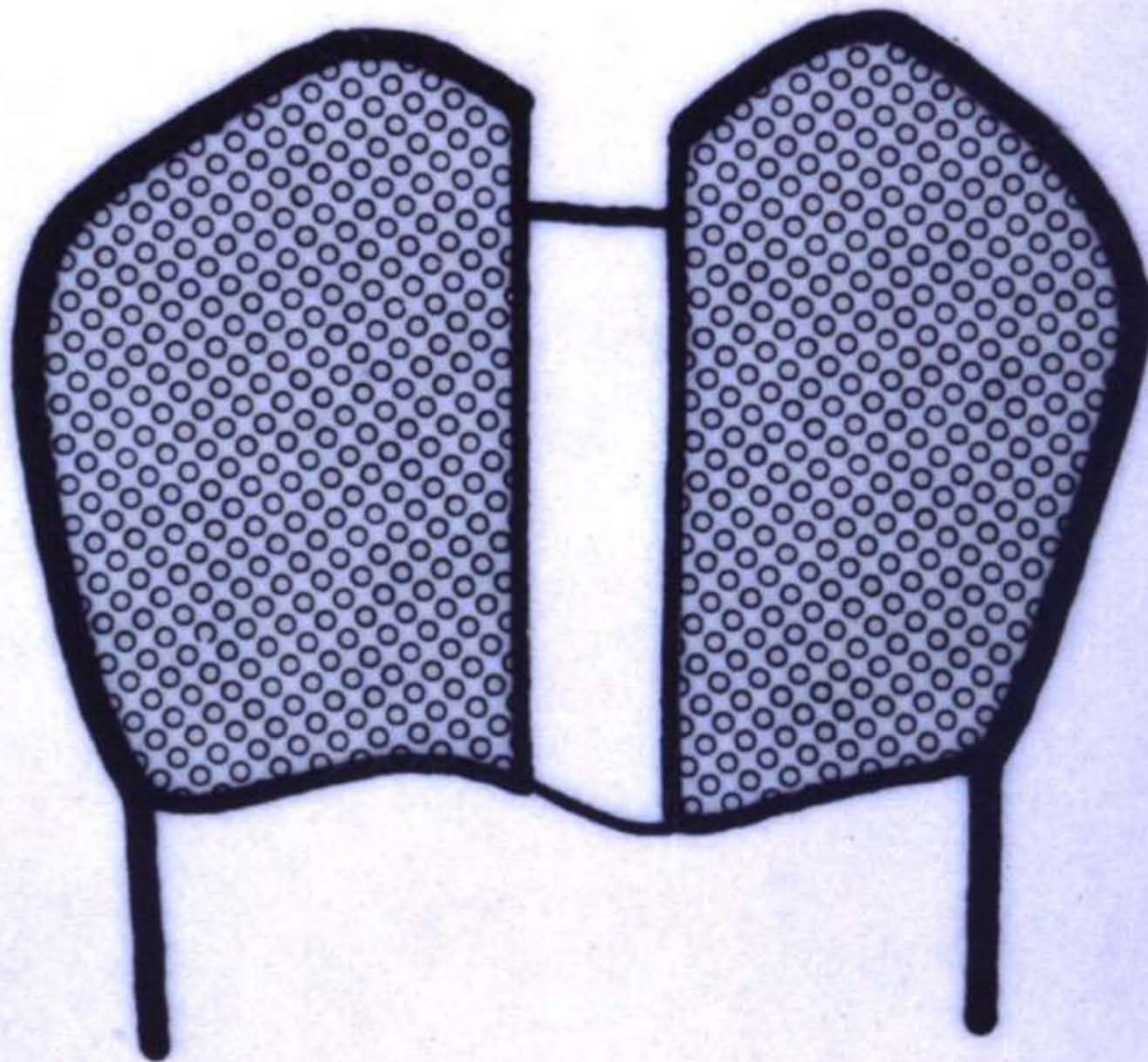
Buccal View

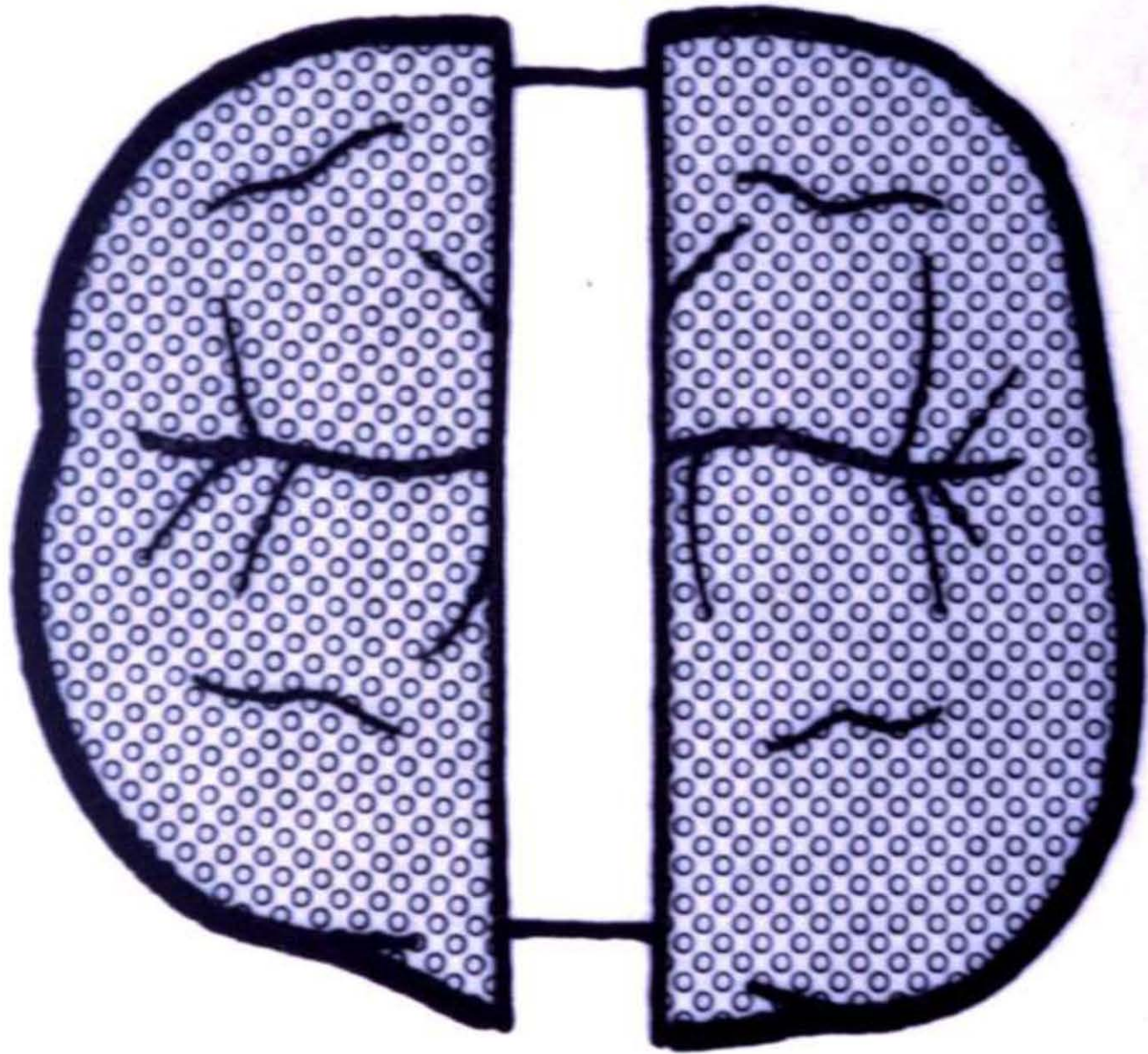
Buccalt

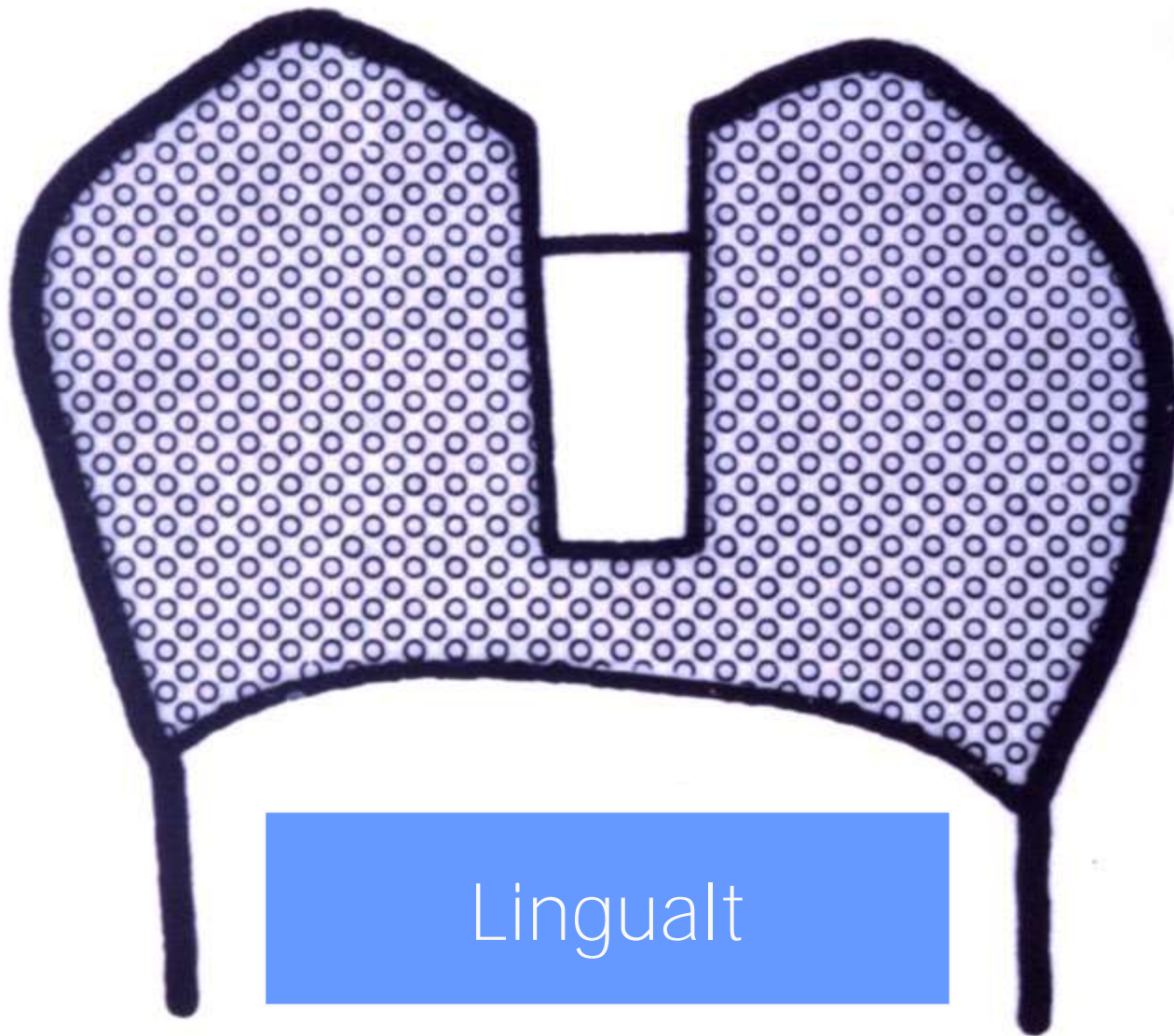


Sement Eksponert

38



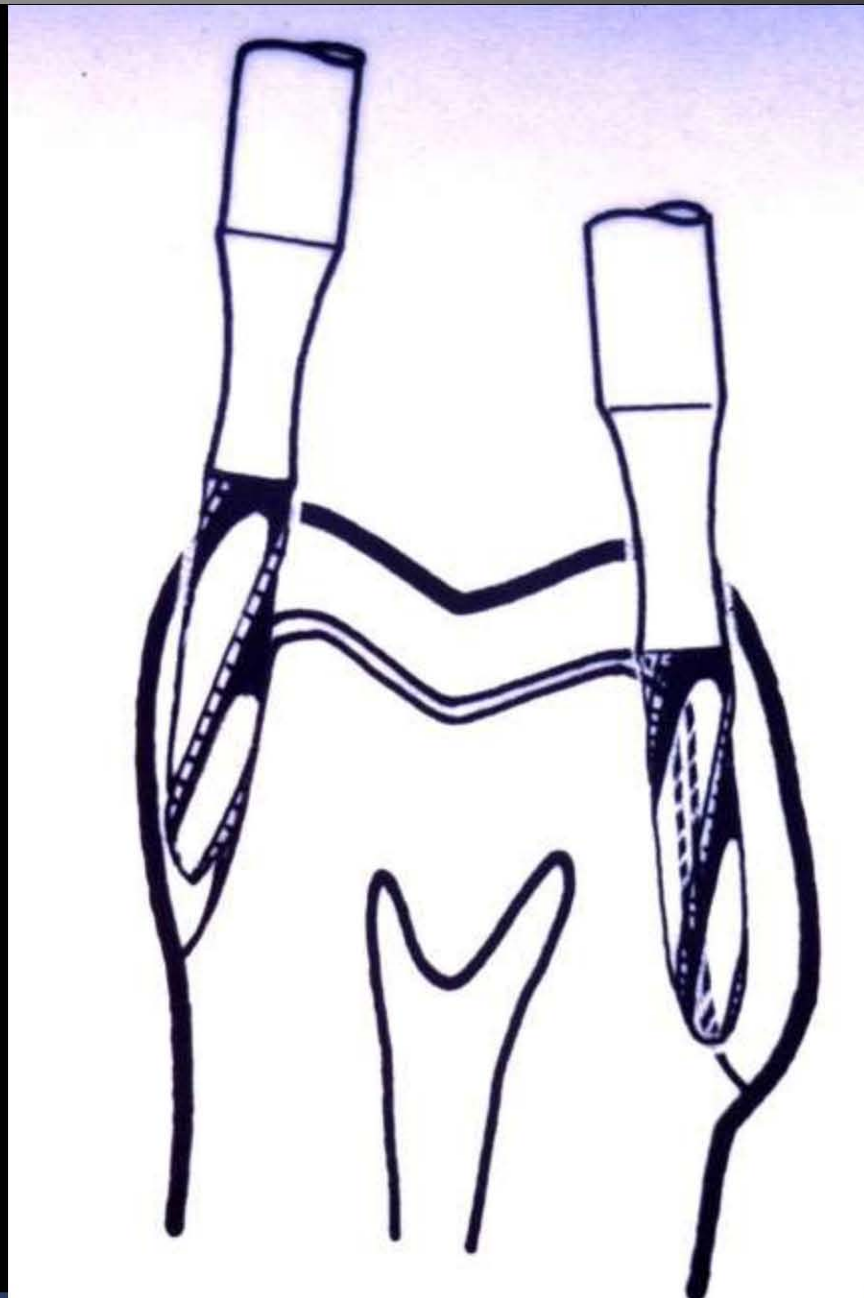


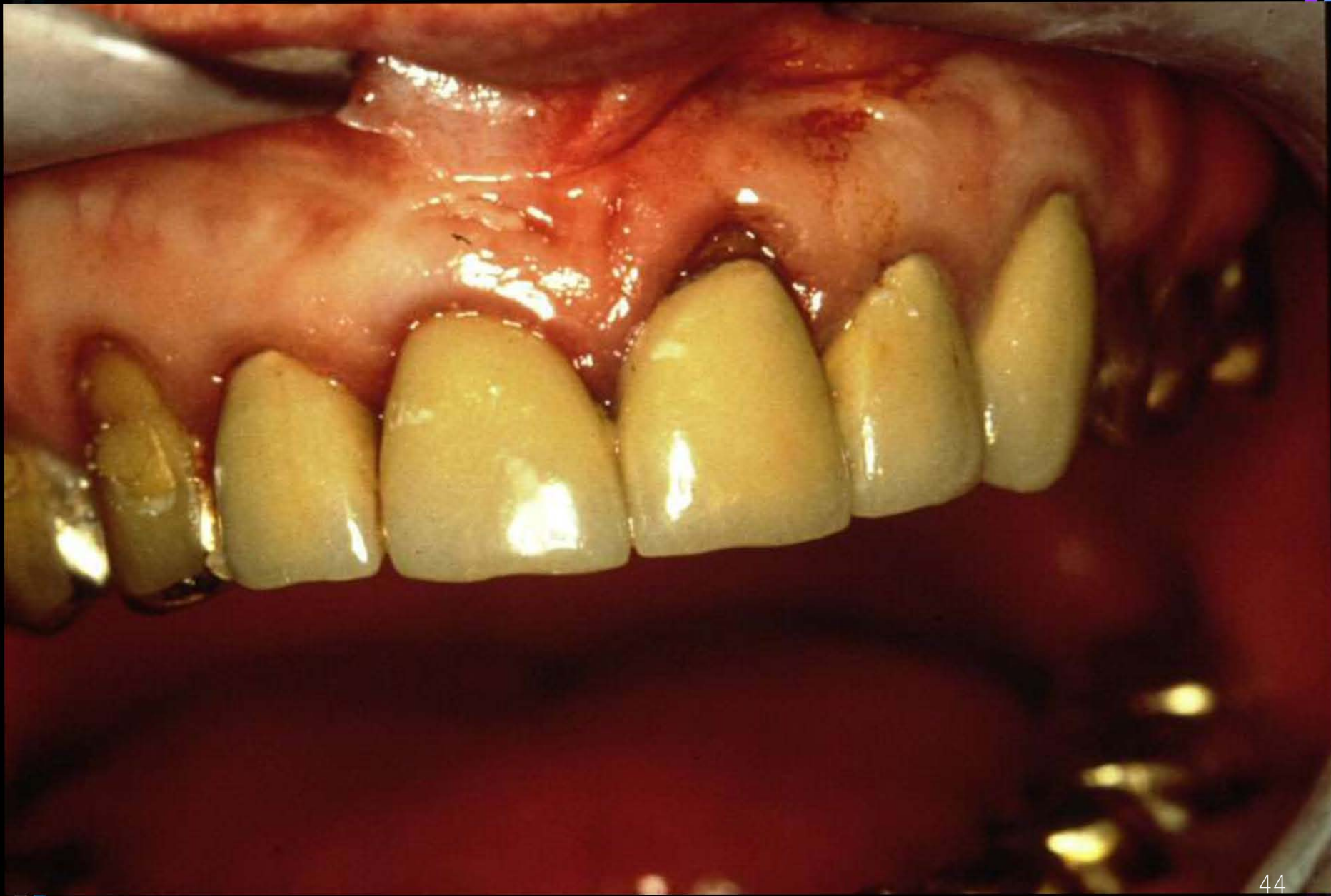


Lingualt



T-håndtak ELLER Ekskavator









Vanligste problem med stifter

	Number of posts and cores studied/affected	Mean incidence
Post loosening	2596/135	5%
Root fracture	3043/95	3%
Caries	1047/16	2%
Periodontal disease	283/6	2%

Goodacre et al. 2003

Stifter - fjerning

Abbott PV. Incidence of root fractures and methods used for post removal. Int Endod J 2002; 35: 63-7.

Hulsmann M. Methods for removing metal obstructions from the root canal. Endod Dent Traumatol 1993; 9(6): 223-37.

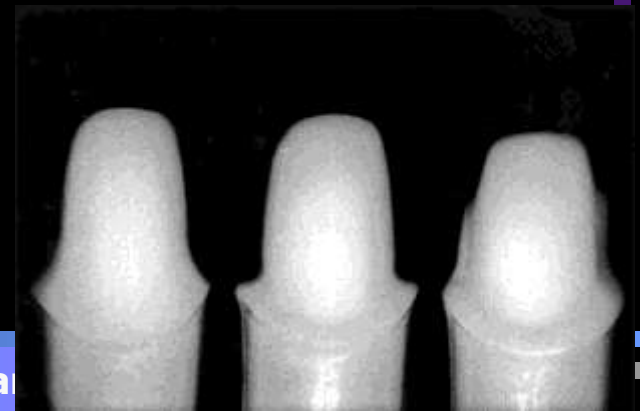


Method	Cast	Parallel	Threaded	Flexipost	Totals
Egglar post remover	91 (39.0)	5 (2.1)	-	-	96 (41.0)
Ultrasonics alone	9 (3.8)	39 (16.7)	-	-	48 (20.5)
Masserann + ultrasonics	5 (2.1)	19 (8.1)	-	1 (0.4)	25 (10.7)
Came out with crown	49 (20.9)	6 (2.6)	1 (0.4)	-	56 (23.9)
Unscrewed with pliers	-	-	9 (3.8)	-	9 (3.8)
Totals	154 (65.8)	69 (29.5)	10 (4.3)	1 (0.4)	234 (100)



Resementering

- Retensjonen blir alltid redusert
- Sementers retinerende egenskaper er redusert ved dårlig tilpasning:
 - Glassionomerasement: noe
 - SinkFosfatsement: mye
 - Polykarbosylatsement: svært mye
- Sandblås innsiden før resegmentering
- Vurder preparering og/eller sementlås og/eller innerkonus





Sandblasters

- 1a. Accu-Prep Deluxe/Dento-Prep
Rønvig/Bisco
- 1b. Microetcher II/Microetcher IIA
Danville Engineering

BEHANDLING - CANDIDA

- ORAL HYGIENE
- DAG OG NATT
- FJERNING AV TRYKK IRRITASJON
- MEDIKAMENTELL
- KIRURGISK

BEHANDLING - CANDIDA

TRYKKAVLASTNING

- VISCO-GEL
- KERR-FITT

BEHANDLING - CANDIDA - MEDIKAMENTELL



- CORSODYL
- FUNGIZONE
- DUMICOAT
- MYCOSTATIN
- SPESIFIKKE ANTIFUNGALE LM
 - NYSTATIN
 - AMFOTERICIN B